

MAY | 2023

Bearcat Breakfast K-12th Grade



No Breakfast served on delay days

MONDAY	TUESDAY	WEDNESDAY	THURSDAY	FRIDAY
1 Banana Chocolate Chunk, Oatmeal Chocolate Chip or French Toast Bar-48 Juice/Fruit Milk	2 Breakfast Uncrustable-16 Juice/Fruit Milk	3 Warm Glazed Donut-35 ☺ Juice/Fruit Milk	4 Grape or Chocolate Crescent Stick-36 Juice/Fruit Milk	5 Egg, Cheese & Sausage Breakfast Bagel-23 Juice/Fruit Milk
8 Banana Chocolate Chunk, Oatmeal Chocolate Chip or French Toast Bar-48 Juice/Fruit Milk	9 K-4: Pop Tarts-36 5-12: Biscuit-24 w/Gravy-4 Juice/Fruit Milk	10 Warm Glazed Donut-35 ☺ Juice/Fruit Milk	11 K-4: Pop Tarts-36 5-12: Warm Cinnamon Breakfast Cookie-44 Juice/Fruit Milk	12 Breakfast Uncrustable-16 Juice/Fruit Milk
15 Banana Chocolate Chunk, Oatmeal Chocolate Chip or French Toast Bar-48 Juice/Fruit Milk	16 Breakfast Uncrustable-16 Juice/Fruit Milk	17 Warm Glazed Donut-35 ☺ Juice/Fruit Milk	18 Fruit Strudel or Crescent Stick-36 Juice/Fruit Milk	19 Egg, Cheese & Sausage Breakfast Bagel-23 Juice/Fruit Milk
22 Banana Chocolate Chunk, Oatmeal Chocolate Chip or French Toast Bar-48 Juice/Fruit Milk	23 K-4: Pop Tarts-36 5-12: Biscuit-24 w/Gravy-4 Juice/Fruit Milk	24 Warm Glazed Donut-35 ☺ Juice/Fruit Milk	25 Cook Choice Assorted Breakfast Juice/Fruit Milk	26 Cook Choice Assorted Breakfast Juice/Fruit Milk
29 No School 	30 Cook Choice Assorted Breakfast Juice/Fruit Milk	31 Cook Choice Assorted Breakfast Juice/Fruit Milk	1 Cook Choice Assorted Breakfast Juice/Fruit Milk	2 Enjoy your Summer! 

K-4: \$1.35 **5-12:** \$1.45
Reduced: \$.30 **Extra Milk** \$.75

*2nd Choice Entrée and extra fruit offered daily
*Cheese stick offered daily for 5-12th grade

No Charging allowed for Breakfast

Menu subject to change

Carb counts included on menu beside the entrée.

**Milk: Choc-20, Wh-13
Juice-15, Fruit-16**

Fruit- Fresh

Apple-19 Banana-27 Orange-21
Grapes-25 Pear-22 Melons-9

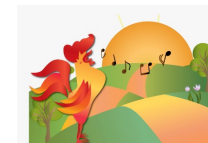
Fruit-Canned

Peaches-14 Pears-16 Mx Fruit-16
Pineapple-19 Juice-15 Craisins-27
Applesauce-20 Raisins-27 Blueberries-11
Peach Crumble-20 Warm Apples-20

Fruit- Frozen

Frozen Slush Cups/Pouches-25
Frozen Strawberry or Peach Cup-20

This institution is an equal opportunity provider.



Free & Reduced Application are available on school's web site or by 419-647-4111 ext.3206.
You may apply anytime throughout the year

Serving Up...Bearcat Pride!!